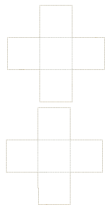


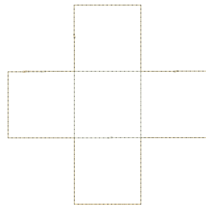
**Bottom 6x10.vip**

4.95x10.03 inches; 3,682 stitches  
8 thread changes; 3 colors



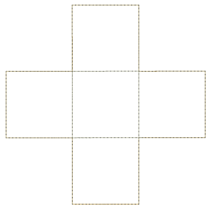
**Bottom 7x11.vip**

5.70x11.56 inches; 4,154 stitches  
4 thread changes; 3 colors



**Bottom2 6x10.vip**

4.86x4.86 inches; 1,841 stitches  
4 thread changes; 3 colors



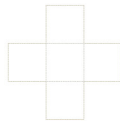
**Bottom2 7x11.vip**

5.60x5.60 inches; 2,075 stitches  
4 thread changes; 3 colors



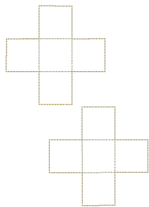
**Bottomandeggs 7x11.vip**

6.26x9.78 inches; 4,293 stitches  
8 thread changes; 4 colors



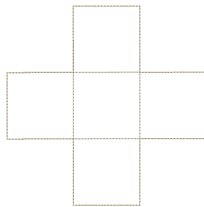
**Bottomandeggs.vip**

7.18x11.22 inches; 4,891 stitches  
8 thread changes; 4 colors



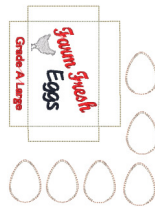
**Bottomx3 5x7.vip**

4.90x6.91 inches; 2,667 stitches  
4 thread changes; 3 colors



**Bottomx5.vip**

6.43x6.43 inches; 2,365 stitches  
4 thread changes; 3 colors



**Topandeggs 5x7.vip**

5.00x6.75 inches; 9,825 stitches  
12 thread changes; 6 colors



**Topandeggs 6x10.vip**

5.43x8.76 inches; 11,689 stitches  
12 thread changes; 6 colors



**Topandeggs 7x11.vip**

6.26x10.09 inches; 13,330 stitches  
12 thread changes; 6 colors



**Topandeggs.vip**

7.18x11.57 inches; 15,242 stitches  
12 thread changes; 6 colors