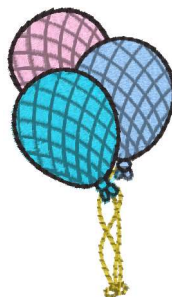




**Llama 1.vip**

2.69x3.83 inches; 12,050 stitches  
20 thread changes; 13 colors



**Llama 10.vip**

1.49x2.59 inches; 4,382 stitches  
5 thread changes; 5 colors



**Llama 2.vip**

3.26x3.76 inches; 13,993 stitches  
21 thread changes; 15 colors



**Llama 3.vip**

3.72x3.74 inches; 12,082 stitches  
22 thread changes; 16 colors



**Llama 4.vip**

2.55x3.91 inches; 10,995 stitches  
20 thread changes; 15 colors



**Llama 5.vip**

2.87x3.83 inches; 10,329 stitches  
16 thread changes; 13 colors



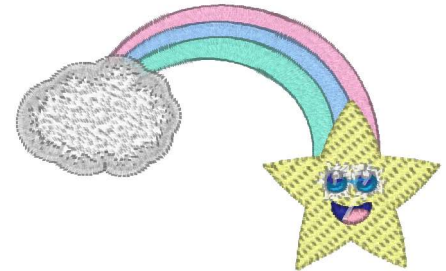
**Llama 6.vip**

3.68x3.85 inches; 12,838 stitches  
24 thread changes; 17 colors



**Llama 7.vip**

2.76x3.88 inches; 11,675 stitches  
15 thread changes; 13 colors



**Llama 8.vip**

3.90x2.43 inches; 5,373 stitches  
12 thread changes; 9 colors



**Llama 9.vip**

3.37x2.72 inches; 6,120 stitches  
3 thread changes; 2 colors