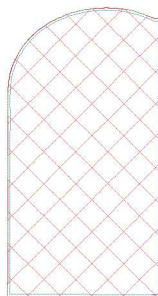
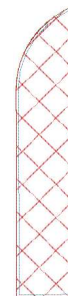


**Design 1a\_left.vip**  
5.37x10.07 inches; 2,147 stitches  
4 thread changes; 4 colors



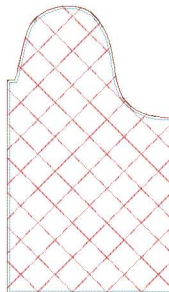
**Design 1a\_right.vip**  
5.37x10.07 inches; 2,147 stitches  
4 thread changes; 4 colors



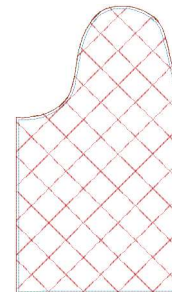
**Design 1b\_left.vip**  
2.00x9.70 inches; 1,471 stitches  
4 thread changes; 4 colors



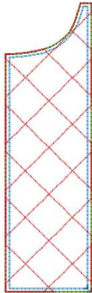
**Design 1b\_right.vip**  
2.00x9.70 inches; 1,471 stitches  
4 thread changes; 4 colors



**Design 2a\_left.vip**  
5.37x9.31 inches; 1,972 stitches  
4 thread changes; 4 colors

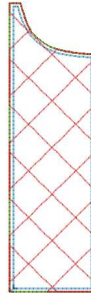


**Design 2a\_right.vip**  
5.37x9.31 inches; 1,972 stitches  
4 thread changes; 4 colors



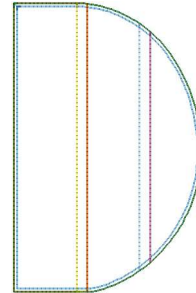
**Design 2b\_left.vip**

2.02x6.91 inches; 1,001 stitches  
4 thread changes; 4 colors



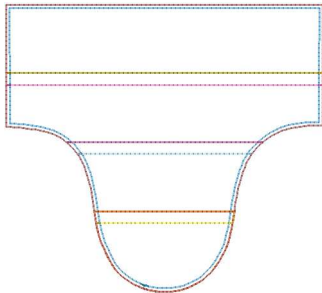
**Design 2b\_right.vip**

2.02x6.91 inches; 1,001 stitches  
4 thread changes; 4 colors



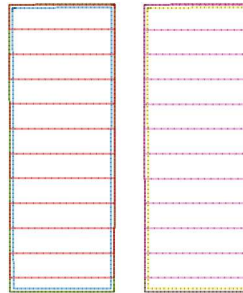
**Design 3a\_left And Right.vip**

4.46x6.87 inches; 1,362 stitches  
10 thread changes; 10 colors



**Design 3b\_left And Right.vip**

6.87x6.23 inches; 1,406 stitches  
13 thread changes; 12 colors



**Design 4\_cuffs Left And Right.vip**

5.69x6.85 inches; 1,921 stitches  
8 thread changes; 8 colors