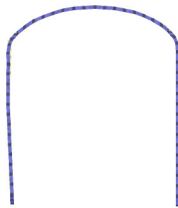
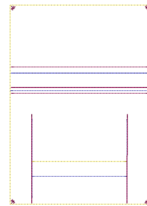




Outer Part With Rose 140x200.vip
5.47x7.85 inches; 10,458 stitches
12 thread changes; 9 colors



Tab Done lth.vip
1.55x1.82 inches; 236 stitches
2 thread changes; 2 colors



Zipper Part.vip
5.49x7.84 inches; 1,357 stitches
13 thread changes; 3 colors