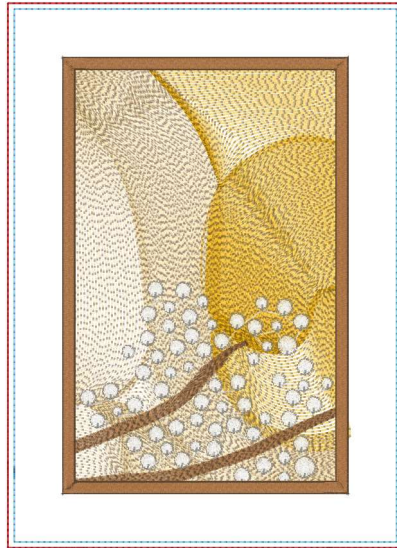
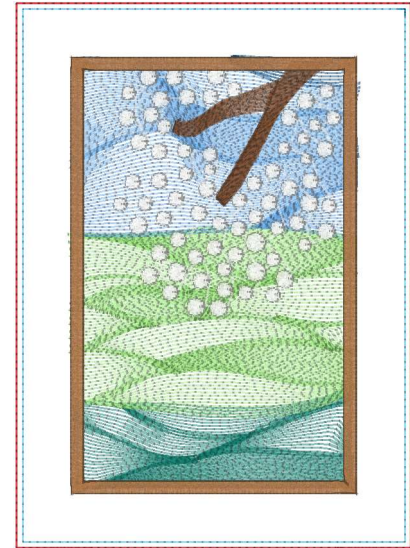


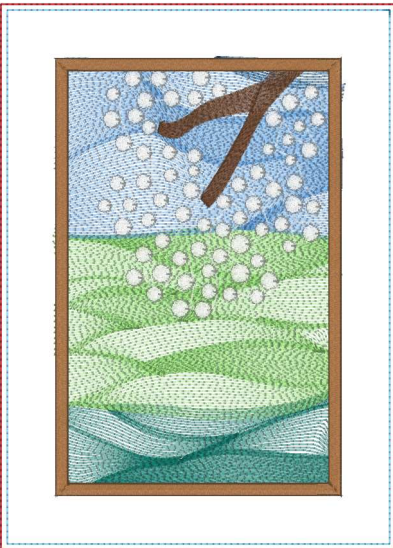
Piece 1 - 5x7.vip
5.12x7.09 inches; 17,756 stitches
10 thread changes; 7 colors



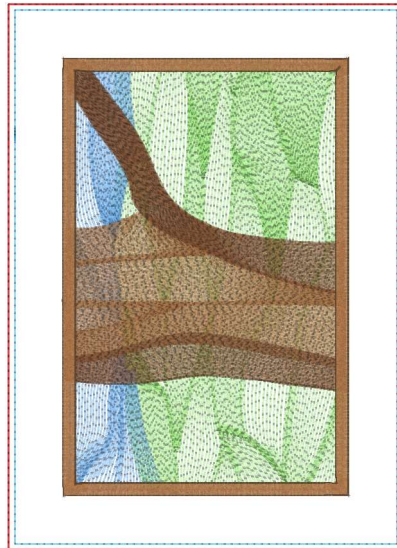
Piece 1 - 6x10.vip
6.30x8.72 inches; 25,053 stitches
10 thread changes; 7 colors



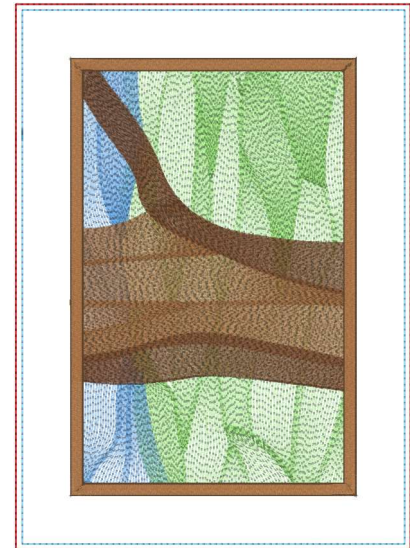
Piece 10 - 5x7.vip
5.12x7.09 inches; 17,239 stitches
13 thread changes; 10 colors



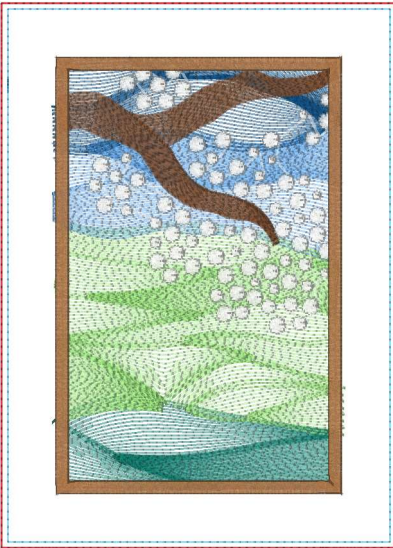
Piece 10 - 6x10.vip
6.30x8.72 inches; 24,024 stitches
13 thread changes; 10 colors



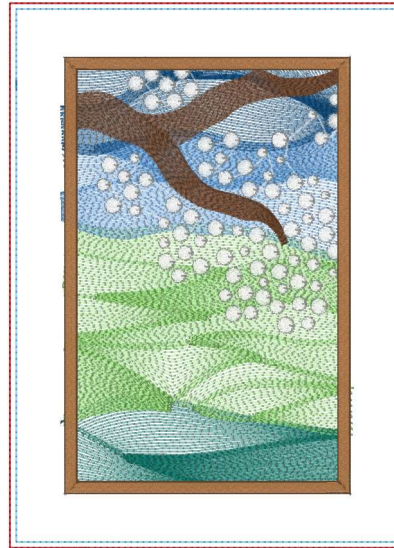
Piece 11 - 5x7.vip
5.12x7.09 inches; 22,028 stitches
12 thread changes; 7 colors



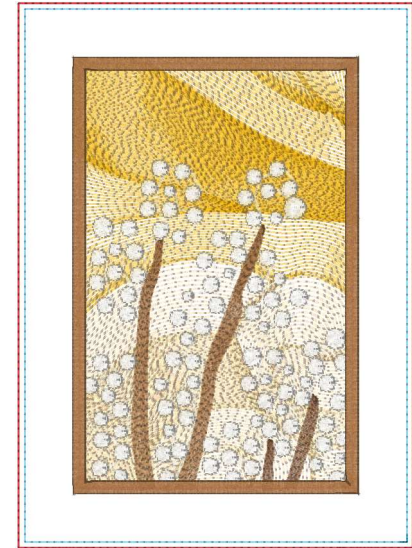
Piece 11 - 6x10.vip
6.30x8.72 inches; 31,451 stitches
12 thread changes; 7 colors



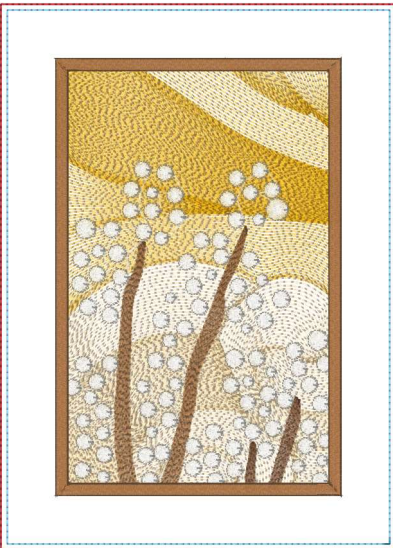
Piece 12 - 5x7.vip
5.12x7.09 inches; 19,087 stitches
13 thread changes; 10 colors



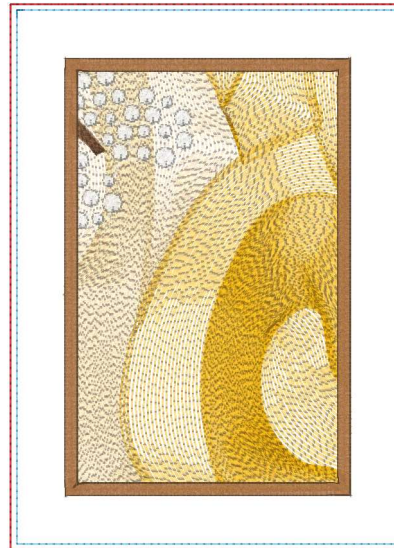
Piece 12 - 6x10.vip
6.30x8.72 inches; 26,796 stitches
13 thread changes; 10 colors



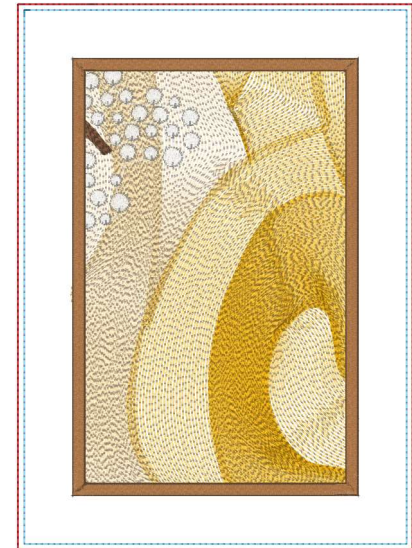
Piece 2 - 5x7.vip
5.12x7.09 inches; 17,067 stitches
11 thread changes; 8 colors



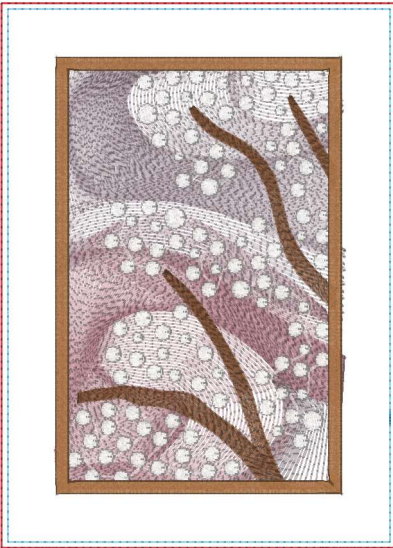
Piece 2 - 6x10.vip
6.30x8.72 inches; 23,536 stitches
11 thread changes; 8 colors



Piece 3 - 5x7.vip
5.12x7.09 inches; 16,016 stitches
10 thread changes; 8 colors



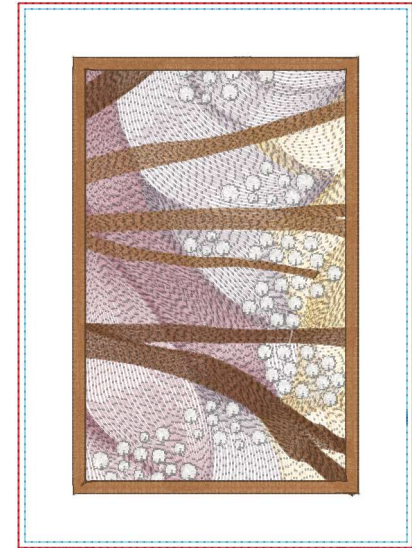
Piece 3 - 6x10.vip
6.30x8.72 inches; 22,613 stitches
10 thread changes; 8 colors



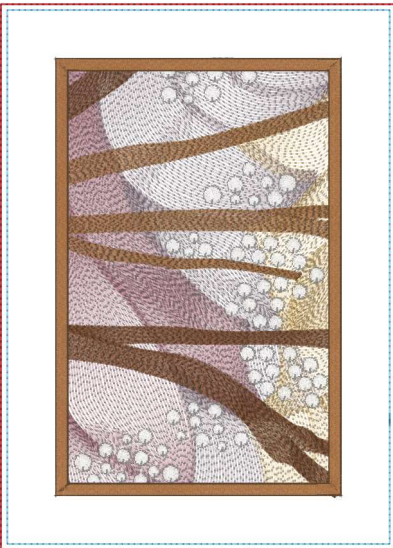
Piece 4 - 5x7.vip
5.12x7.09 inches; 20,993 stitches
11 thread changes; 9 colors



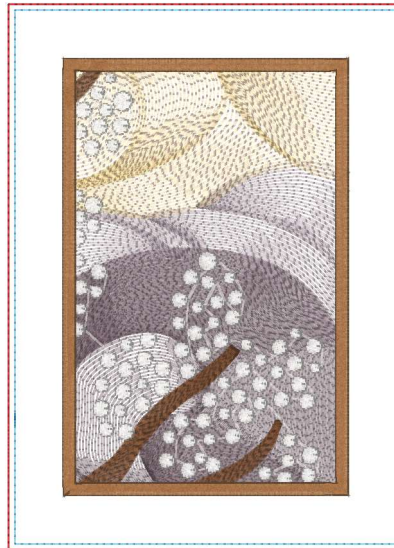
Piece 4 - 6x10.vip
6.30x8.72 inches; 29,195 stitches
11 thread changes; 9 colors



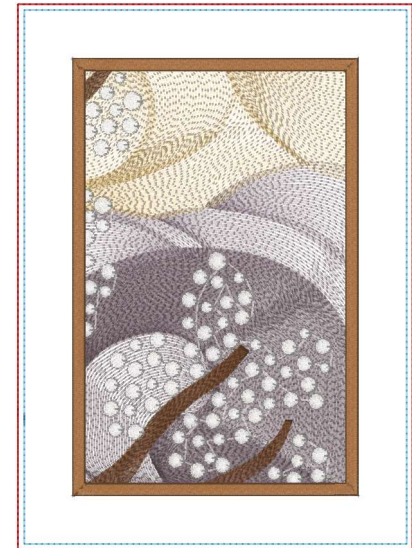
Piece 5 - 5x7.vip
5.12x7.09 inches; 19,697 stitches
12 thread changes; 9 colors



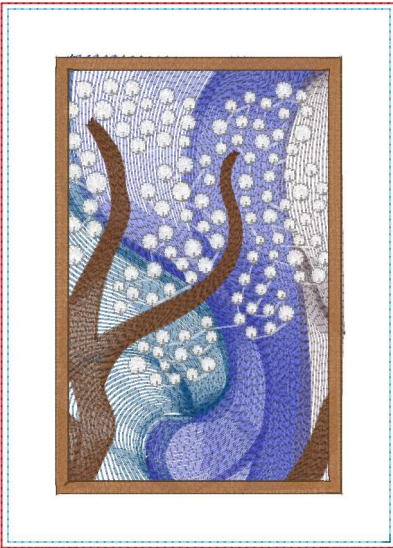
Piece 5 - 6x10.vip
6.30x8.72 inches; 27,395 stitches
12 thread changes; 9 colors



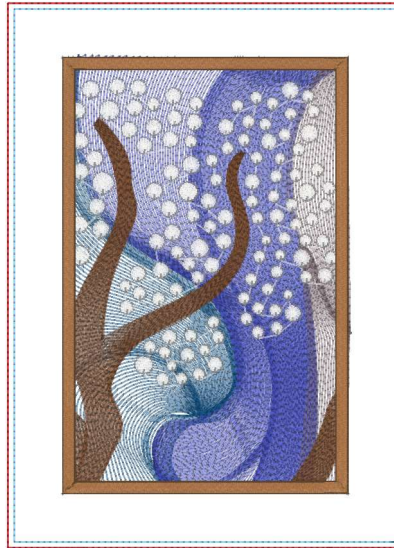
Piece 6 - 5x7.vip
5.12x7.09 inches; 17,882 stitches
11 thread changes; 9 colors



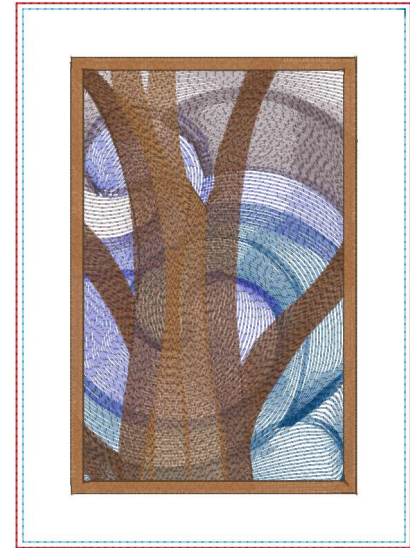
Piece 6 - 6x10.vip
6.30x8.72 inches; 24,800 stitches
11 thread changes; 9 colors



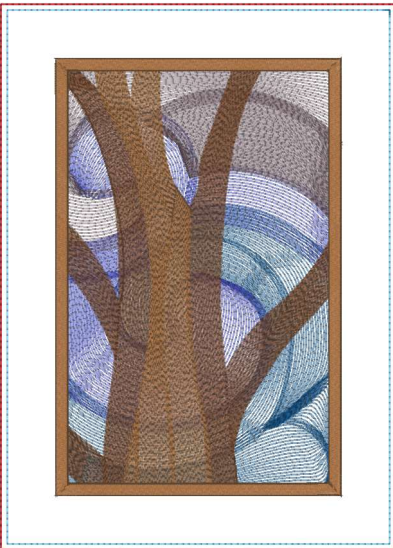
Piece 7 - 5x7.vip
5.12x7.09 inches; 19,987 stitches
11 thread changes; 9 colors



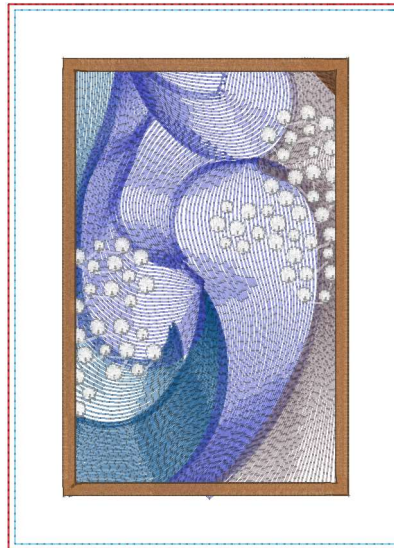
Piece 7 - 6x10.vip
6.30x8.72 inches; 27,616 stitches
11 thread changes; 9 colors



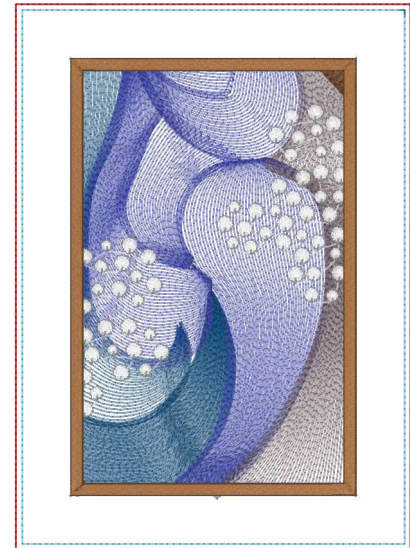
Piece 8 - 5x7.vip
5.12x7.09 inches; 20,959 stitches
12 thread changes; 8 colors



Piece 8 - 6x10.vip
6.30x8.72 inches; 29,929 stitches
12 thread changes; 8 colors



Piece 9 - 5x7.vip
5.12x7.09 inches; 15,343 stitches
11 thread changes; 9 colors



Piece 9 - 6x10.vip
6.30x8.72 inches; 21,069 stitches
11 thread changes; 9 colors