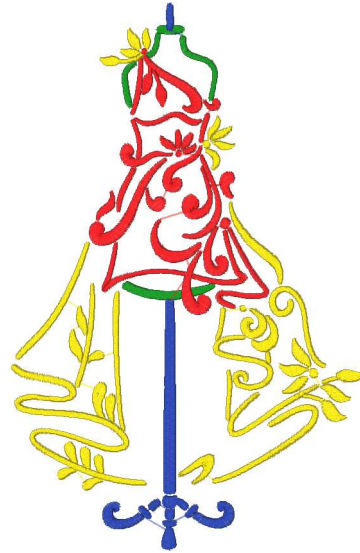
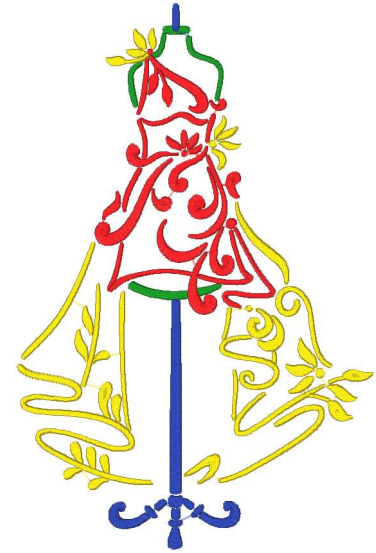


**Spring Fashion 2 5x7\_bbe.vip**  
4.45x6.85 inches; 12,601 stitches  
5 thread changes; 5 colors



**Spring Fashion 2 6x10\_bbe.vip**  
5.86x9.01 inches; 16,544 stitches  
4 thread changes; 4 colors



**Spring Fashion 2 7x11\_bbe.vip**  
6.86x10.55 inches; 19,539 stitches  
4 thread changes; 4 colors