



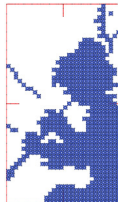
1_8-14 Tomin .vip

6.85x12.41 inches; 47,956 stitches
2 thread changes; 2 colors



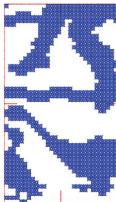
2_8-14 Tomin .vip

4.49x12.41 inches; 22,117 stitches
2 thread changes; 2 colors



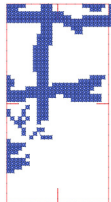
Geese_1 (1)_tomin-Emb@yandexru.vip

3.54x6.26 inches; 11,459 stitches
2 thread changes; 2 colors



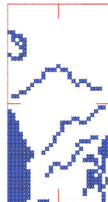
Geese_1 (2)_tomin-Emb@yandexru.vip

3.54x6.26 inches; 12,419 stitches
2 thread changes; 2 colors



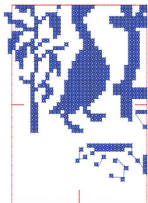
Geese_1 (3)_tomin-Emb@yandexru.vip

3.31x6.27 inches; 5,771 stitches
2 thread changes; 2 colors

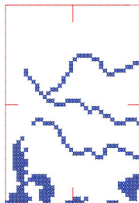


Geese_1 (4)_tomin-Emb@yandexru.vip

3.19x6.26 inches; 4,304 stitches
2 thread changes; 2 colors



Geese_1 (5)_tomin-Emb@yandexru.vip
4.49x6.28 inches; 9,053 stitches
2 thread changes; 2 colors



Geese_1 (6)_tomin-Emb@yandexru.vip
4.25x6.25 inches; 3,629 stitches
2 thread changes; 2 colors