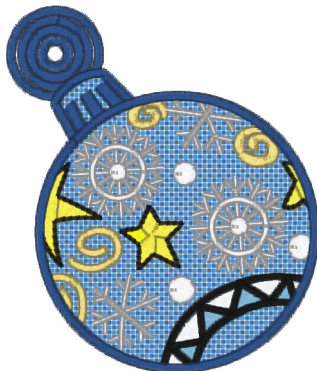


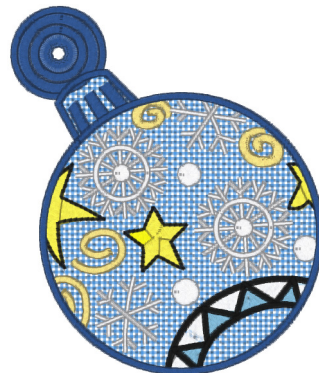
Fsl1129.pes

1.75x2.04 inches; 9,205 stitches
9 thread changes; 8 colors



Fsl1129_var_2.pes

2.60x3.05 inches; 14,363 stitches
9 thread changes; 8 colors



Fsl1129_var_3.pes

3.43x4.04 inches; 17,754 stitches
9 thread changes; 8 colors