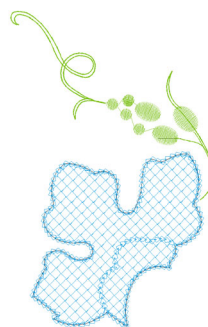


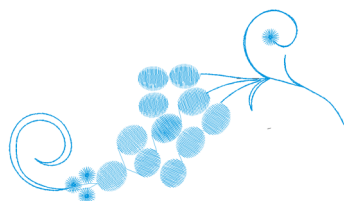
- 1. Blue Black (Sul-R:1182)
- 2. Sapphire (Sul-R:1534)
- 3. Avocado (Sul-R:1177)
- 4. (Sul-R:1319)

Chrysanthemum1.dst
6.48x6.94 inches; 21,981 stitches
4 thread changes; 4 colors



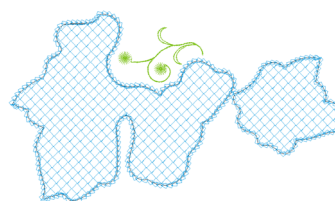
- 1. Blue Black (Sul-R:1182)
- 2. Sapphire (Sul-R:1534)
- 3. Avocado (Sul-R:1177)

Chrysanthemum2.dst
4.41x6.89 inches; 6,845 stitches
3 thread changes; 3 colors



- 1. Blue Black (Sul-R:1182)
- 2. Sapphire (Sul-R:1534)

Chrysanthemum3.dst
6.32x3.67 inches; 4,862 stitches
2 thread changes; 2 colors



- 1. Blue Black (Sul-R:1182)
- 2. Sapphire (Sul-R:1534)
- 3. Avocado (Sul-R:1177)

Chrysanthemum4.dst
7.54x4.35 inches; 7,789 stitches
3 thread changes; 3 colors



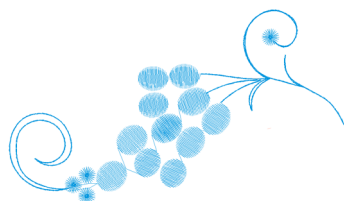
- 1. RGB(218,27,29) (RGB:1)
- 2. RGB(247,197,180) (RGB:2)
- 3. RGB(239,155,160) (RGB:3)
- 4. RGB(247,197,180) (RGB:4)

Chrysanthemum1.exp
6.48x6.94 inches; 21,981 stitches
4 thread changes; 4 colors



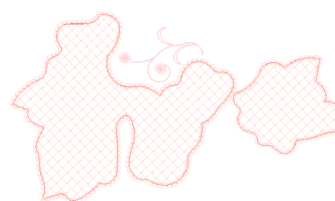
- 1. RGB(218,27,29) (RGB:1)
- 2. RGB(247,197,180) (RGB:2)
- 3. RGB(255,225,225) (RGB:3)

Chrysanthemum2.exp
4.41x6.89 inches; 6,845 stitches
3 thread changes; 3 colors



- 1. RGB(247,197,180) (RGB:1)
- 2. RGB(0,124,195) (RGB:2)

Chrysanthemum3.exp
6.32x3.67 inches; 4,862 stitches
2 thread changes; 2 colors



- 1. RGB(218,27,29) (RGB:1)
- 2. RGB(247,197,180) (RGB:2)
- 3. RGB(255,210,210) (RGB:3)

Chrysanthemum4.exp
7.54x4.35 inches; 7,789 stitches
3 thread changes; 3 colors



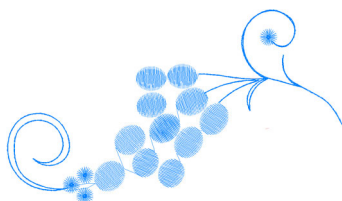
- 1. Dark Orange
- 2. Pink
- 3. Pink
- 4. Pink

Chrysanthemum1.hus
6.48x6.94 inches; 21,981 stitches
4 thread changes; 2 colors



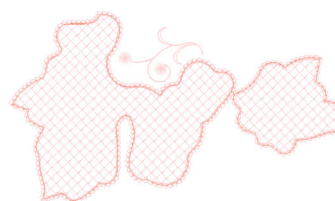
- 1. Dark Orange
- 2. Pink
- 3. Light Pink

Chrysanthemum2.hus
4.41x6.89 inches; 6,845 stitches
3 thread changes; 3 colors



- 1. Pink
- 2. Light Blue

Chrysanthemum3.hus
6.32x3.67 inches; 4,862 stitches
2 thread changes; 2 colors



- 1. Dark Orange
- 2. Pink
- 3. Light Pink

Chrysanthemum4.hus
7.54x4.35 inches; 7,789 stitches
3 thread changes; 3 colors



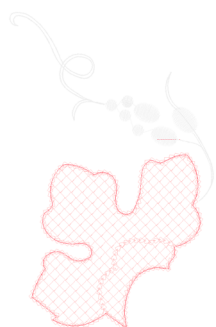
- 1. Cardinal Red (244)
- 2. Salmon Pink (233)
- 3. Salmon (256)
- 4. Salmon Pink (233)

Chrysanthemum1.jef
6.48x6.94 inches; 21,984 stitches
4 thread changes; 3 colors



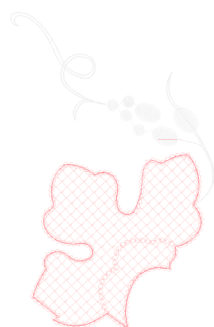
- 1. Cardinal Red (244)
- 2. Salmon Pink (233)
- 3. Salmon (256)
- 4. Salmon Pink (233)

Chrysanthemum1.jef+
6.48x6.94 inches; 21,984 stitches
4 thread changes; 3 colors



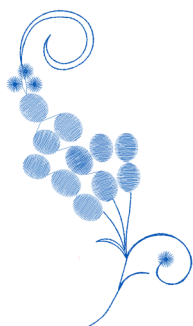
- 1. Cardinal Red (244)
- 2. Salmon Pink (233)
- 3. White (001)

Chrysanthemum2.jef
4.41x6.89 inches; 6,847 stitches
3 thread changes; 3 colors



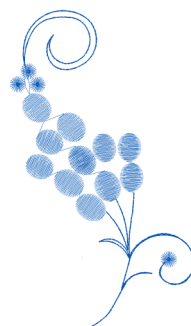
- 1. Cardinal Red (244)
- 2. Salmon Pink (233)
- 3. White (001)

Chrysanthemum2.jef+
4.41x6.89 inches; 6,847 stitches
3 thread changes; 3 colors



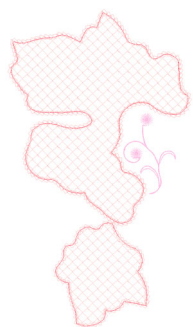
- 1. Salmon Pink (233)
- 2. Ocean Blue (222)

Chrysanthemum3.jef
3.67x6.32 inches; 4,863 stitches
2 thread changes; 2 colors



- 1. Salmon Pink (233)
- 2. Ocean Blue (222)

Chrysanthemum3.jef+
3.67x6.32 inches; 4,863 stitches
2 thread changes; 2 colors



- 1. Cardinal Red (244)
- 2. Salmon Pink (233)
- 3. Orchid Pink (240)

Chrysanthemum4.jef
4.35x7.54 inches; 7,791 stitches
3 thread changes; 3 colors



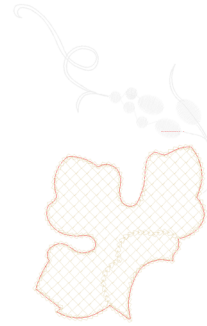
- 1. Cardinal Red (244)
- 2. Salmon Pink (233)
- 3. Orchid Pink (240)

Chrysanthemum4.jef+
4.35x7.54 inches; 7,791 stitches
3 thread changes; 3 colors



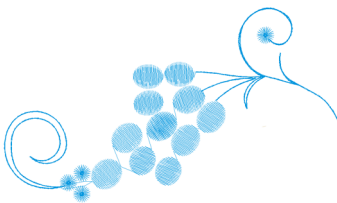
- 1. Red
- 2. Beige
- 3. Salmon Pink
- 4. Beige

Chrysanthemum1.pec
6.48x6.94 inches; 21,990 stitches
4 thread changes; 3 colors



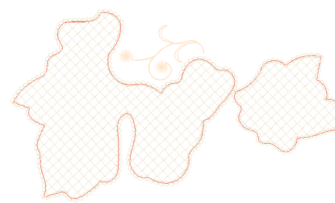
- 1. Red
- 2. Beige
- 3. White

Chrysanthemum2.pec
4.42x6.90 inches; 6,850 stitches
3 thread changes; 3 colors



- 1. Beige
- 2. Electric Blue

Chrysanthemum3.pec
6.32x3.67 inches; 4,867 stitches
2 thread changes; 2 colors



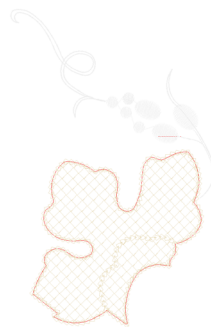
- 1. Red
- 2. Beige
- 3. Linen

Chrysanthemum4.pec
7.54x4.35 inches; 7,797 stitches
3 thread changes; 3 colors



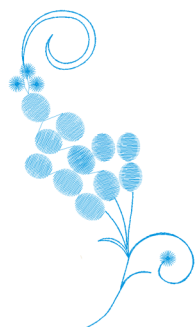
- 1. Red
- 2. Beige
- 3. Salmon Pink
- 4. Beige

Chrysanthemum1.pes
6.48x6.94 inches; 21,990 stitches
4 thread changes; 3 colors



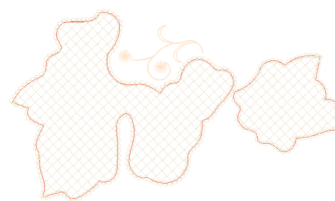
- 1. Red
- 2. Beige
- 3. White

Chrysanthemum2.pes
4.42x6.90 inches; 6,850 stitches
3 thread changes; 3 colors



- 1. Beige
- 2. Electric Blue

Chrysanthemum3.pes
3.67x6.32 inches; 4,867 stitches
2 thread changes; 2 colors



- 1. Red
- 2. Beige
- 3. Linen

Chrysanthemum4.pes
7.54x4.35 inches; 7,797 stitches
3 thread changes; 3 colors



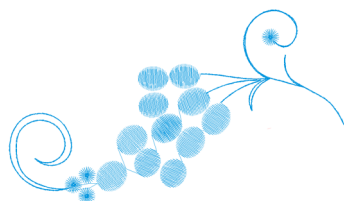
- 1. Poppy (Sul-R:1317)
- 2. Med. Peach (Sul-R:1015)
- 3. Pastel Coral (Sul-R:1016)
- 4. Med. Peach (Sul-R:1015)

Chrysanthemum1.vip
6.48x6.94 inches; 21,981 stitches
4 thread changes; 3 colors



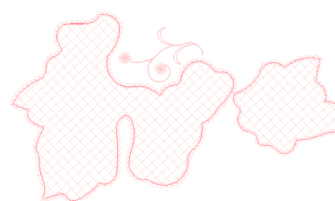
- 1. Poppy (Sul-R:1317)
- 2. Med. Peach (Sul-R:1015)
- 3. Pale Pink (Sul-R:1120)

Chrysanthemum2.vip
4.41x6.89 inches; 6,845 stitches
3 thread changes; 3 colors



- 1. Med. Peach (Sul-R:1015)
- 2. Sapphire (Sul-R:1534)

Chrysanthemum3.vip
6.32x3.67 inches; 4,862 stitches
2 thread changes; 2 colors



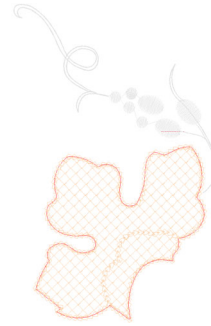
- 1. Poppy (Sul-R:1317)
- 2. Med. Peach (Sul-R:1015)
- 3. Pastel Mauve (Sul-R:1113)

Chrysanthemum4.vip
7.54x4.35 inches; 7,789 stitches
3 thread changes; 3 colors



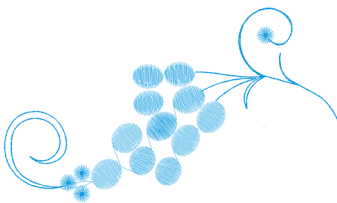
- 1. Mad-P:1779
- 2. Mad-P:1723
- 3. Mad-P:1915
- 4. Mad-P:1723

Chrysanthemum1.vp3
6.48x6.94 inches; 21,981 stitches
4 thread changes; 3 colors



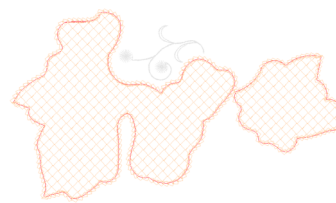
- 1. Mad-P:1779
- 2. Mad-P:1723
- 3. Mad-P:1803

Chrysanthemum2.vp3
4.41x6.89 inches; 6,845 stitches
3 thread changes; 3 colors



- 1. Mad-P:1723
- 2. Mad-P:1694

Chrysanthemum3.vp3
6.32x3.67 inches; 4,862 stitches
2 thread changes; 2 colors



- 1. Mad-P:1779
- 2. Mad-P:1723
- 3. Mad-P:1803

Chrysanthemum4.vp3
7.54x4.35 inches; 7,789 stitches
3 thread changes; 3 colors