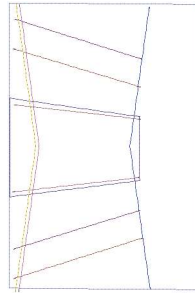
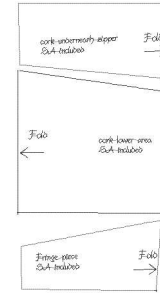


**Inner Pocket 5x7.vip**  
4.86x6.78 inches; 761 stitches  
6 thread changes; 3 colors



**Main Part Nicole Bag 8x12.vip**  
7.83x11.75 inches; 1,565 stitches  
15 thread changes; 5 colors



**Patterns For Cork Parts.vip**  
6.10x11.56 inches; 3,725 stitches  
1 thread changes; 1 colors