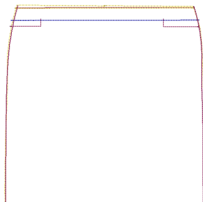


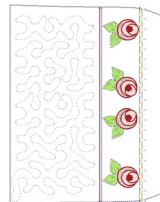
Back Part 6x8.vip

6.11x7.82 inches; 1,449 stitches
9 thread changes; 3 colors



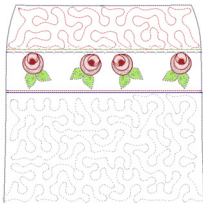
Back Part 8x8.vip

7.83x7.76 inches; 1,556 stitches
9 thread changes; 3 colors



Rose And Lace Cosmetic Purse Front Part 6x8.vip

6.03x7.81 inches; 10,492 stitches
16 thread changes; 10 colors



Rose And Lace Cosmetic Purse Front Part 8x8.vip

7.85x7.73 inches; 10,675 stitches
17 thread changes; 11 colors