



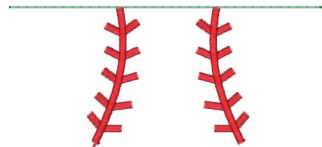
Bottom Part 1 Lg.vip

2.42x5.64 inches; 1,880 stitches
2 thread changes; 2 colors



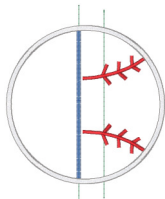
Bottom Part 1 Md.vip

2.11x4.91 inches; 1,644 stitches
2 thread changes; 2 colors



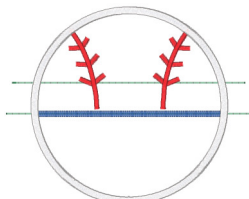
Bottom Part 1 Sm.vip

4.25x1.90 inches; 1,453 stitches
2 thread changes; 2 colors



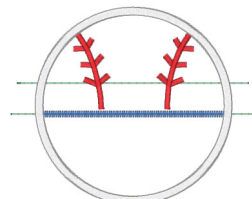
Top Part2 Lg.vip

4.75x5.97 inches; 4,698 stitches
5 thread changes; 4 colors



Top Part2 Md.vip

5.20x4.15 inches; 4,093 stitches
5 thread changes; 4 colors



Top Part2 Sm.vip

4.50x3.63 inches; 3,570 stitches
5 thread changes; 4 colors