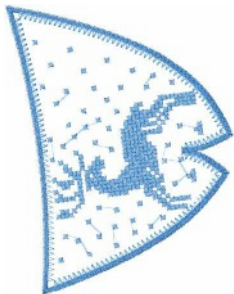


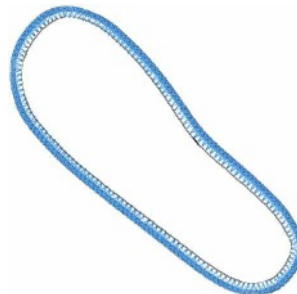
N 1612 \$.vip
6.15x7.5 inches; 11,05 stitches
4 thread changes; 3 colors



M 1612 \$ vip
7.50x7.40 inches; 7,307 stitches
4 thread changes; 4 colors



N 1612 \$ vip
6.15x7.5 inches; 11,05 stitches
4 thread changes; 3 colors



M 1612 \$ vip
7.50x7.40 inches; 7,307 stitches
4 thread changes; 4 colors