

**She5362a\_001.pes**

3.87x2.11 inches; 8,799 stitches  
9 thread changes; 8 colors



**She5362a\_002.pes**

3.87x2.37 inches; 13,866 stitches  
10 thread changes; 9 colors



**She5362a\_003.pes**

3.86x2.55 inches; 12,341 stitches  
11 thread changes; 8 colors



**She5362a\_004.pes**

3.86x2.26 inches; 9,080 stitches  
14 thread changes; 12 colors



**She5362a\_005.pes**

3.90x3.01 inches; 14,108 stitches  
17 thread changes; 12 colors



**She5362a\_006.pes**

3.86x2.04 inches; 9,246 stitches  
12 thread changes; 9 colors



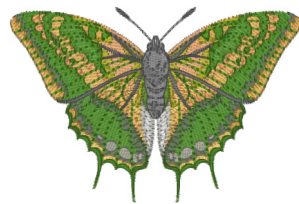
**She5362a\_007.pes**

3.87x3.02 inches; 12,388 stitches  
13 thread changes; 9 colors



**She5362a\_008.pes**

3.87x2.49 inches; 8,601 stitches  
12 thread changes; 8 colors



**She5362a\_009.pes**

3.87x2.59 inches; 11,904 stitches  
17 thread changes; 9 colors