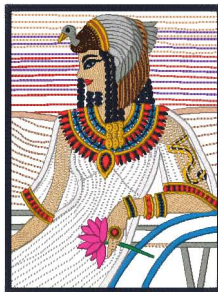




**Queen Of Egypt - 5x7 - Part 1.vip**  
4.98x6.61 inches; 32,703 stitches  
33 thread changes; 17 colors



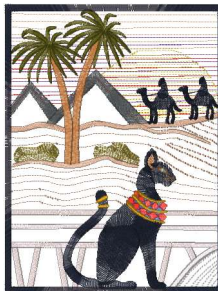
**Queen Of Egypt - 5x7 - Part 2.vip**  
4.98x6.62 inches; 41,005 stitches  
40 thread changes; 18 colors



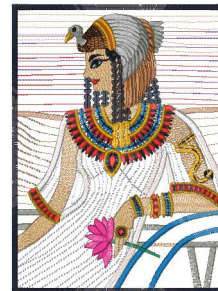
**Queen Of Egypt - 5x7 - Part 3.vip**  
4.98x6.61 inches; 29,475 stitches  
32 thread changes; 18 colors



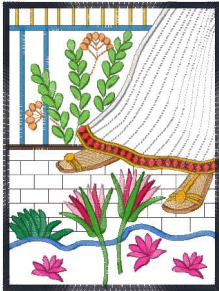
**Queen Of Egypt - 5x7 - Part 4.vip**  
4.98x6.61 inches; 31,255 stitches  
35 thread changes; 16 colors



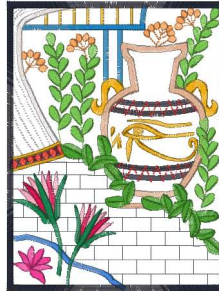
**Queen Of Egypt - 6x8 - Part 1.vip**  
5.87x7.80 inches; 39,569 stitches  
33 thread changes; 17 colors



**Queen Of Egypt - 6x8 - Part 2.vip**  
5.87x7.81 inches; 49,005 stitches  
40 thread changes; 18 colors



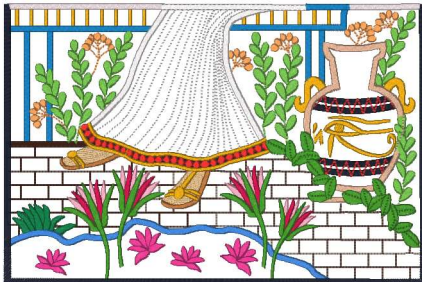
**Queen Of Egypt - 6x8 - Part 3.vip**  
5.88x7.81 inches; 34,660 stitches  
32 thread changes; 18 colors



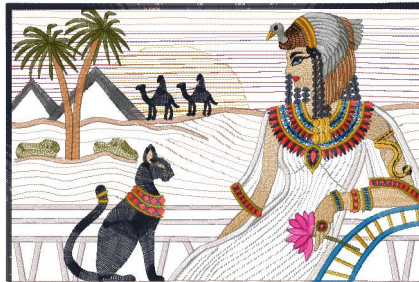
**Queen Of Egypt - 6x8 - Part 4.vip**  
5.87x7.80 inches; 36,582 stitches  
35 thread changes; 16 colors



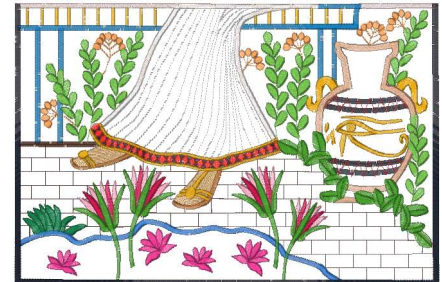
**Queen Of Egypt - 7x10 - Part 1.vip**  
9.83x6.55 inches; 69,198 stitches  
49 thread changes; 22 colors



**Queen Of Egypt - 7x10 - Part 2.vip**  
9.83x6.55 inches; 54,727 stitches  
41 thread changes; 20 colors



**Queen Of Egypt - 8x12 - Part 1.vip**  
11.75x7.83 inches; 84,486 stitches  
49 thread changes; 22 colors



**Queen Of Egypt - 8x12 - Part 2.vip**  
11.75x7.83 inches; 65,135 stitches  
41 thread changes; 20 colors