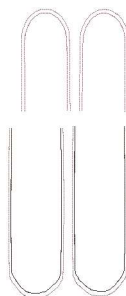


Hooping1 Limbs 5x7.vip
2.98x6.87 inches; 3,799 stitches
8 thread changes; 4 colors



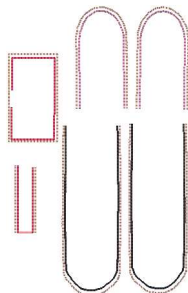
Hooping1 Limbs 6x10.vip
4.13x9.95 inches; 5,187 stitches
8 thread changes; 4 colors



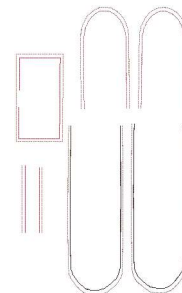
Hooping1 Limbs 7x11.vip
4.68x11.51 inches; 6,010 stitches
8 thread changes; 4 colors



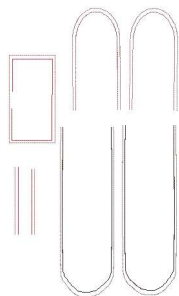
Hooping1 Limbs.vip
5.20x11.51 inches; 6,113 stitches
8 thread changes; 4 colors



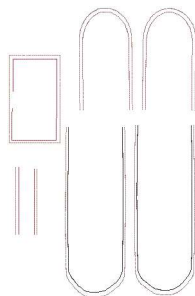
Hooping1 Limbsandbow 5x7.vip
4.26x6.87 inches; 5,031 stitches
12 thread changes; 5 colors



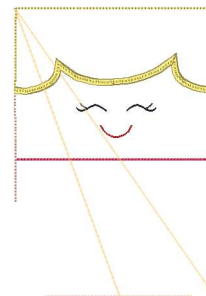
Hooping1 Limbsandbow 6x10.vip
5.91x9.95 inches; 6,922 stitches
12 thread changes; 5 colors



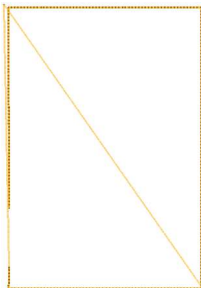
Hooping1 Limbsandbow 7x11.vip
6.69x11.51 inches; 7,966 stitches
12 thread changes; 5 colors



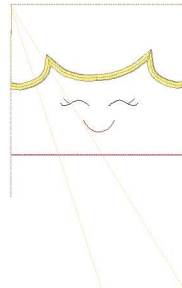
Hooping1 Limbsandbow.vip
7.44x11.51 inches; 8,141 stitches
12 thread changes; 5 colors



Hooping2 Body 5x7-A.vip
4.80x6.93 inches; 4,138 stitches
15 thread changes; 6 colors



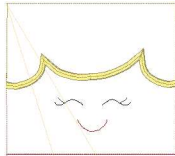
Hooping2 Body 5x7-B.vip
4.80x6.93 inches; 1,524 stitches
5 thread changes; 3 colors



Hooping2 Body 6x10-A.vip
6.04x9.99 inches; 5,331 stitches
15 thread changes; 6 colors



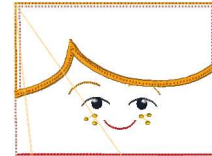
Hooping2 Body 6x10-B.vip
6.04x9.99 inches; 2,060 stitches
5 thread changes; 3 colors



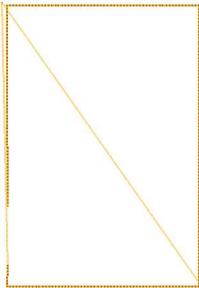
Hooping2 Body 7x11-A.vip
6.84x11.56 inches; 6,007 stitches
15 thread changes; 6 colors



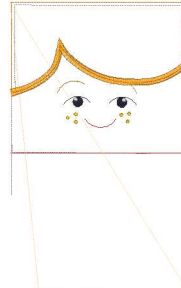
Hooping2 Body 7x11-B.vip
6.84x11.56 inches; 2,355 stitches
5 thread changes; 3 colors



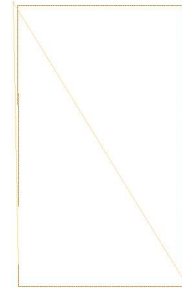
Hooping2 Boybody 5x7-A.vip
4.84x6.90 inches; 5,707 stitches
15 thread changes; 7 colors



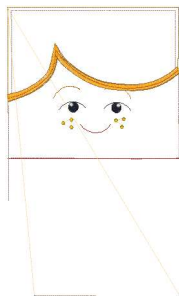
Hooping2 Boybody 5x7-B.vip
4.84x6.90 inches; 1,644 stitches
7 thread changes; 3 colors



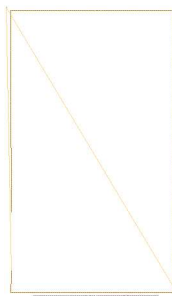
Hooping2 Boybody 6x10-A.vip
6.07x9.99 inches; 7,442 stitches
15 thread changes; 7 colors



Hooping2 Boybody 6x10-B.vip
6.07x9.99 inches; 2,213 stitches
7 thread changes; 3 colors



Hooping2 Boybody 7x11-A.vip
6.88x11.56 inches; 8,425 stitches
15 thread changes; 7 colors



Hooping2 Boybody 7x11-B.vip
6.88x11.56 inches; 2,528 stitches
7 thread changes; 3 colors