

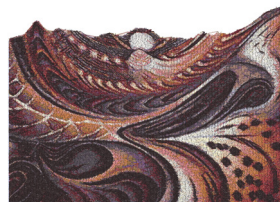
African_tomin.vip

9.83x13.50 inches; 267,643 stitches
14 thread changes; 14 colors



African_tomin_1.vip

9.86x7.72 inches; 145,649 stitches
15 thread changes; 15 colors



African_tomin_2.vip

9.86x7.10 inches; 119,201 stitches
15 thread changes; 15 colors