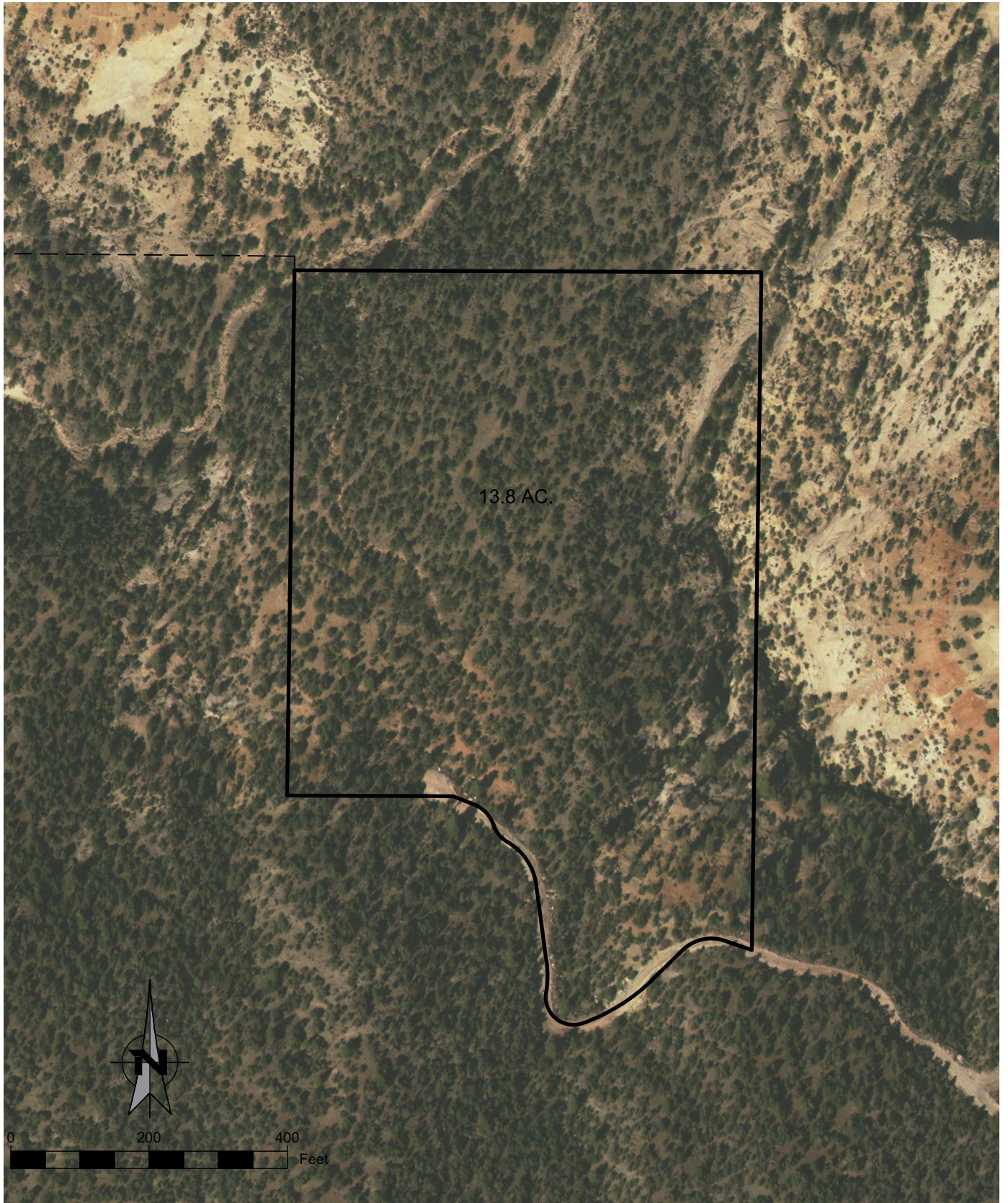




HAROLD & NETA DRIGGS
LOCATION (SW1/4, SEC 16, T. 28 S., R. 10 E.)



13.8 AC.

THREE CREEKS-LOT 2

LOCATION (SW1/4, SEC 27, T. 29 S., R. 4 E.)

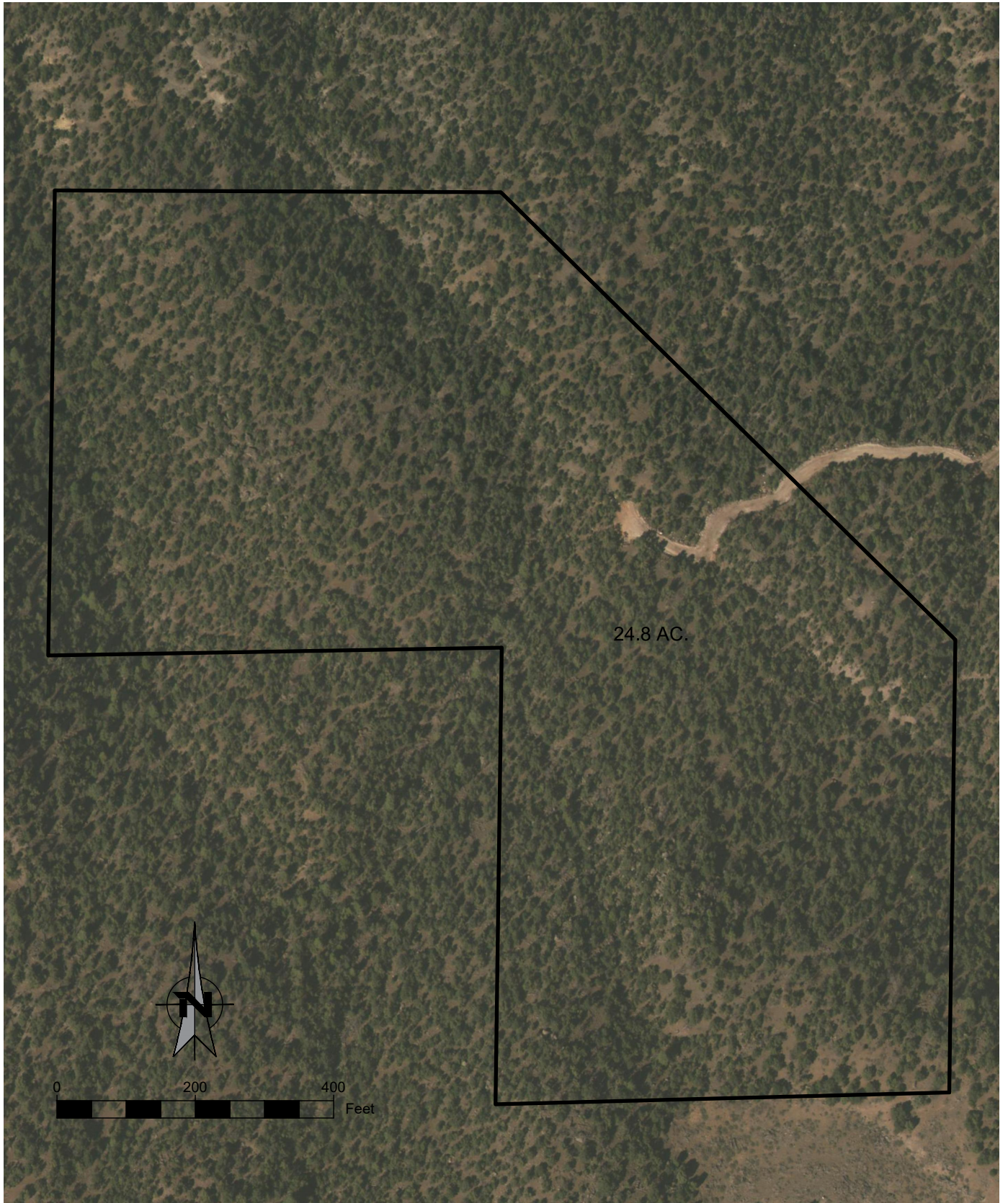
TORGERSEN ENGINEERING
265 N 600 E
Richfield, UT 84701



(435) 893-0081
www.TorgEng.com

Drawing # 19804.TC2

Dwg By. RJB Ref: 1401CB_MERA SUB



THREE CREEKS - LOT 5
LOCATION (SW1/4, SEC 27, T. 29 S., R. 4 E.)

TORGERSEN ENGINEERING
265 N 600 E
Richfield, UT 84701



(435) 893-0081
www.TorgEng.com

Drawing # 19804.TC5
Dwg By. RJB Ref: 1401CB_MERA SUB



6.00 ACRES

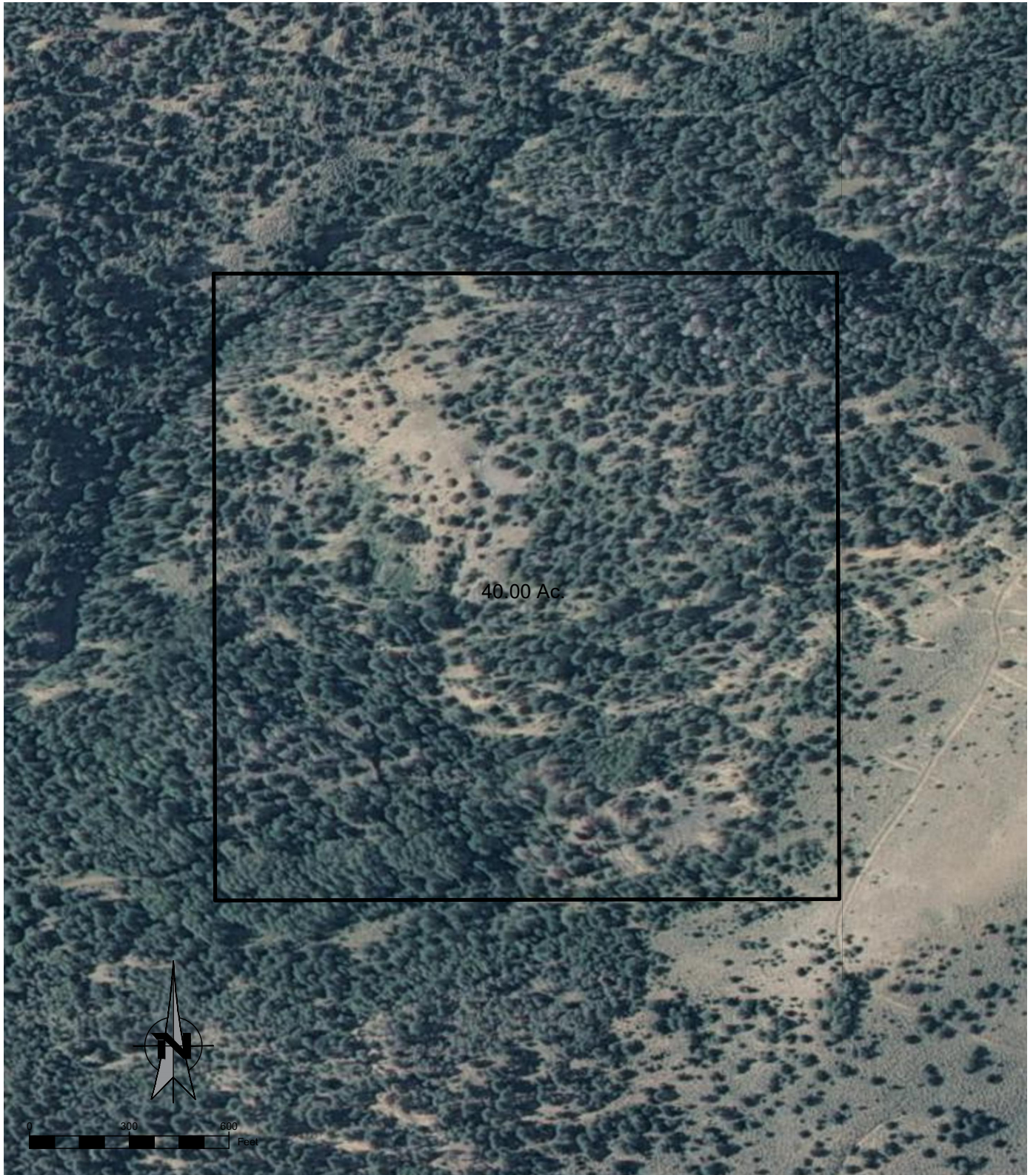
BOULDER HOMESTEAD-LOT 4
LOCATION (NE1/4, SEC 32, T. 29 S., R. 5 E.)

TORGERSEN ENGINEERING
265 N 600 E
Richfield, UT 84701

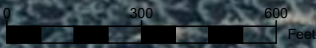


(435) 893-0081
www.TorgEng.com

Drawing # 19804.B
Dwg By. RJB Ref: _____



40.00 Ac.



MCLEAN DURFEY

ERTUID-28-17

LOCATION (NE1/4 SW1/4, SEC 28, T. 31 S., R. 10 E.)





40.00 Ac.

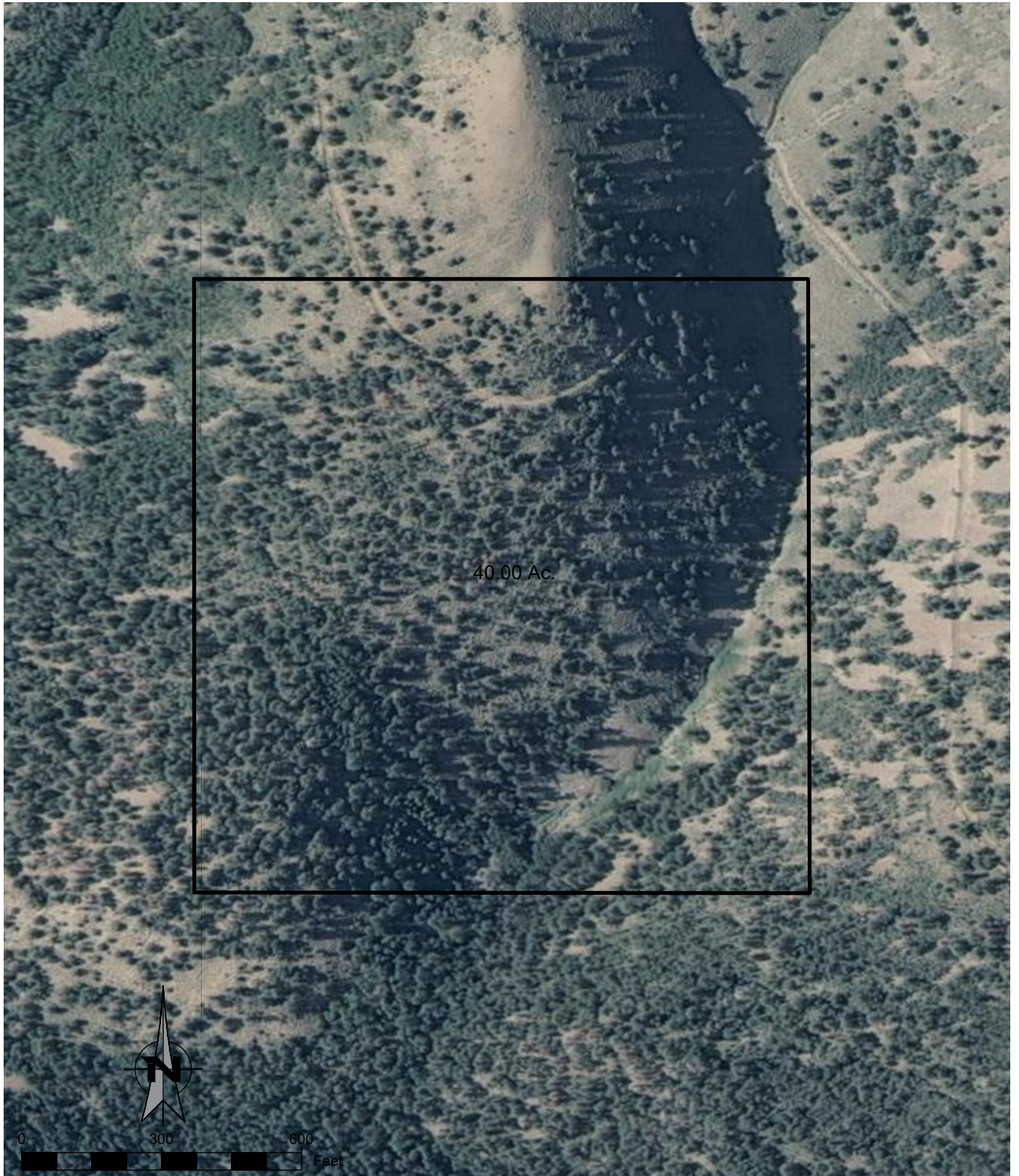


MCLEAN DURFEY

ERTUID-28-16

LOCATION (N1/2 S1/2 SE1/4, SEC 28, T. 31 S., R. 10 E.)





40.00 Ac.



0 300 600 Feet

MCLEAN DURFEY

ERTUID-26-2

LOCATION (NW1/4 SE1/4, SEC 21, T. 31 S., R. 10 E.)

TORGERSEN ENGINEERING
265 N 600 E
Richfield, UT 84701



(435) 893-0081
www.TorgEng.com

Drawing # 19804.D3

Dwg By. RJB

Ref: 1309KD



PETRA ROSE - LOT 2

LOCATION (SE1/4 of SEC 13, T. 29 S., R. 4 E.)

TORGERSEN ENGINEERING
265 N 600 E
Richfield, UT 84701



(435) 893-0081
www.TorgEng.com

Drawing # 19804.R

Dwg By: RJB Ref: 0409PR,JC-0102